



OpenNebula based Cluster Manager

Tomasz Sońnicki

IFJ PAN

Cracow University of Technology

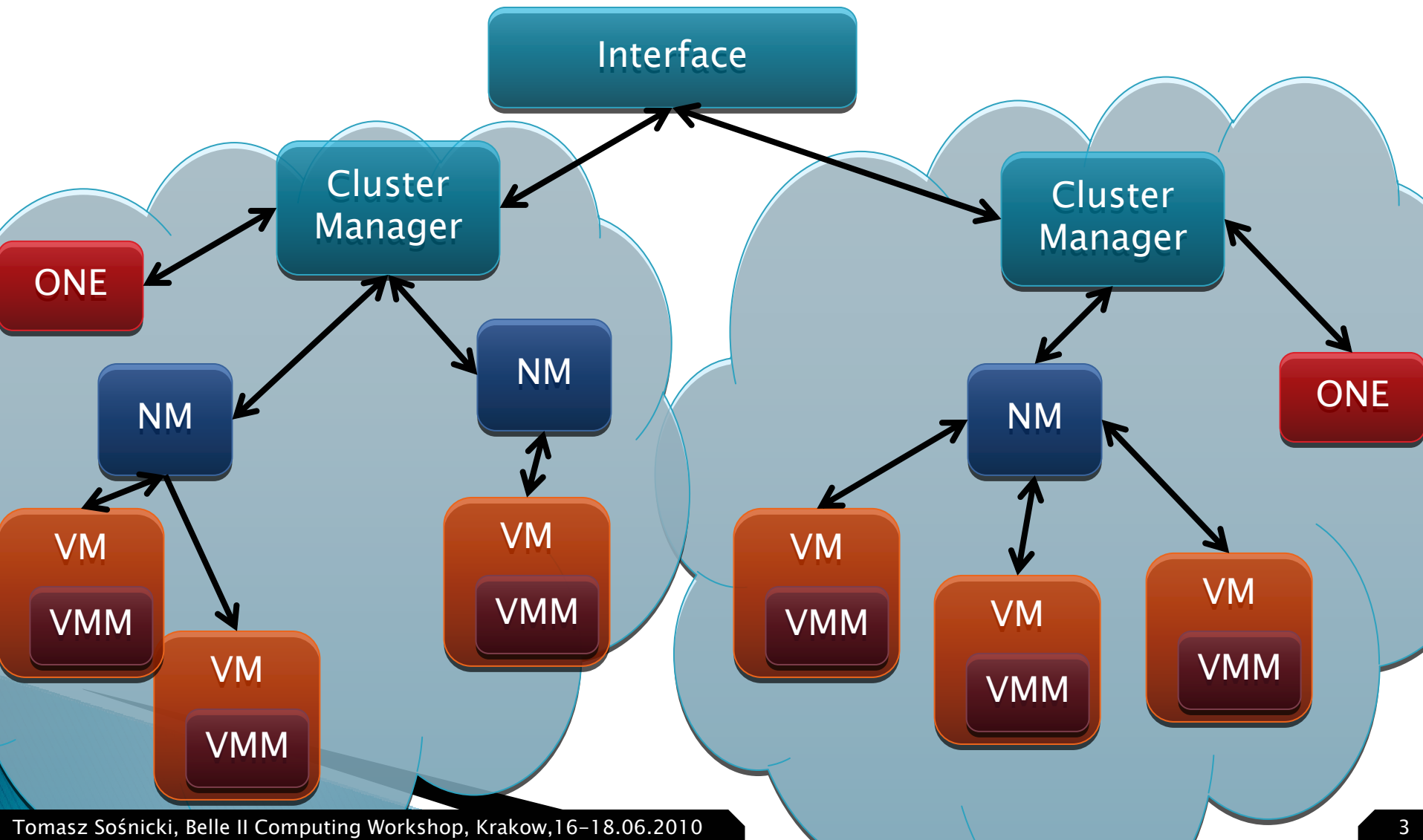


Dictionary

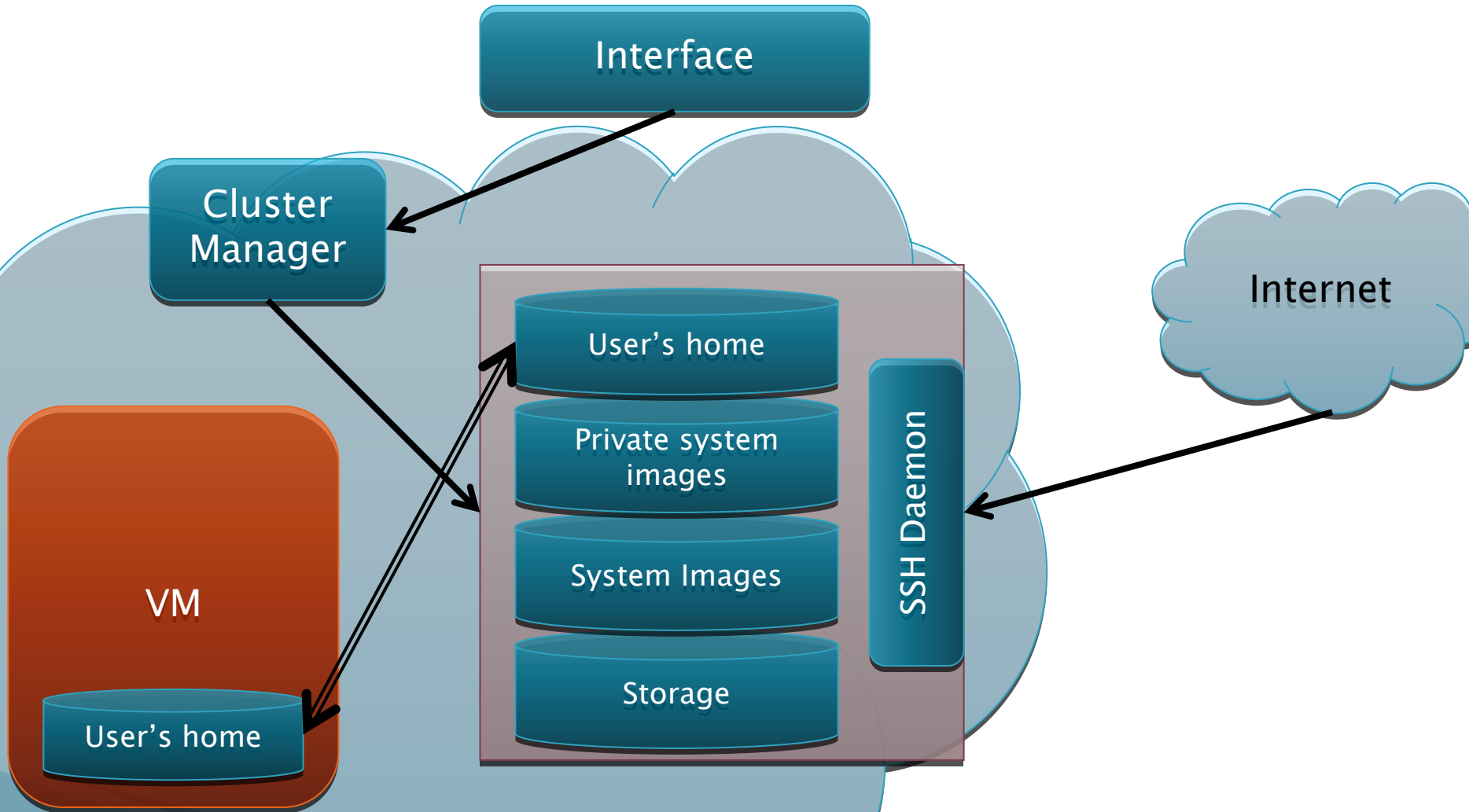
- ▶ Cluster – set of physical machines connected to the one local network,
- ▶ Node – machine in a cluster,
- ▶ VM – Virtual Machine – operating system running under the hypervisor e.g. XEN or KVM,
- ▶ CM – Cluster Manager – daemon running on one of the nodes,
- ▶ NM – Node Manager – daemon running on each node,
- ▶ VMM – Virtual Machine Manager – daemon running on the virtual machine,
- ▶ Farm – set of virtual machines which belong to the particular user,
- ▶ VM Template – type of VM, few parameters i.e. number of cores, amount of RAM etc.,
- ▶ ONE – OpenNebula – cluster management software.



Logical architecture

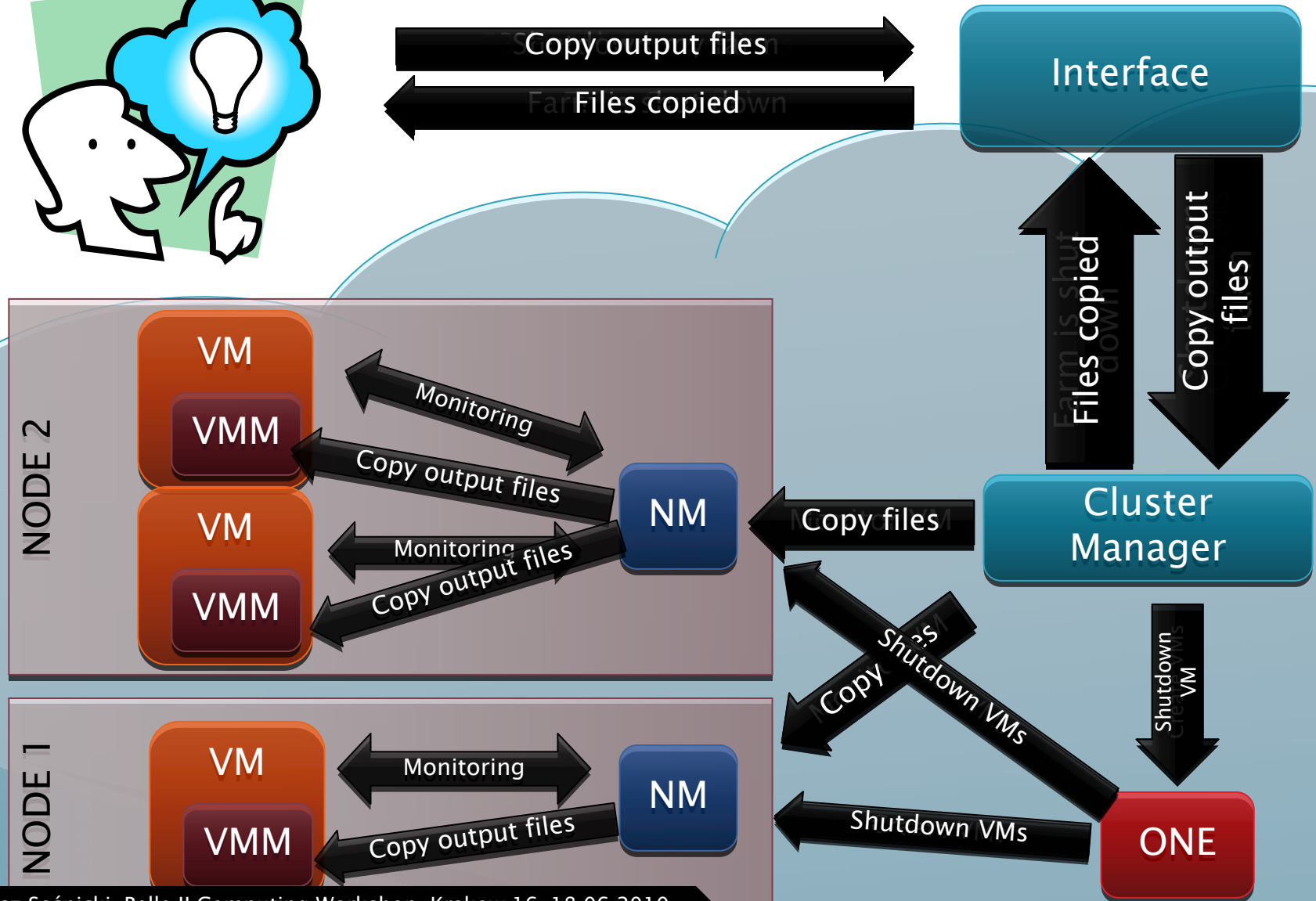
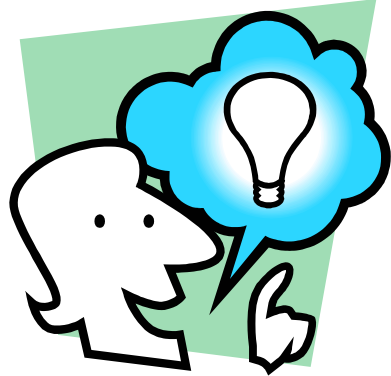


Storage





Simple example



Summary



- ▶ What we have done:
 - Prototypes of managers:
 - Cluster Manager
 - Node Manager
 - Virtual Machine Manager
 - Prototype of user interface

- ▶ To do list:
 - Add more functionalities like:
 - Mounting home folders
 - Downloading SSH keys and VPN certificates
 - Storage management
 - Extensive tests