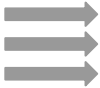


AstroTeq.ai

The Software Interface of the Detector

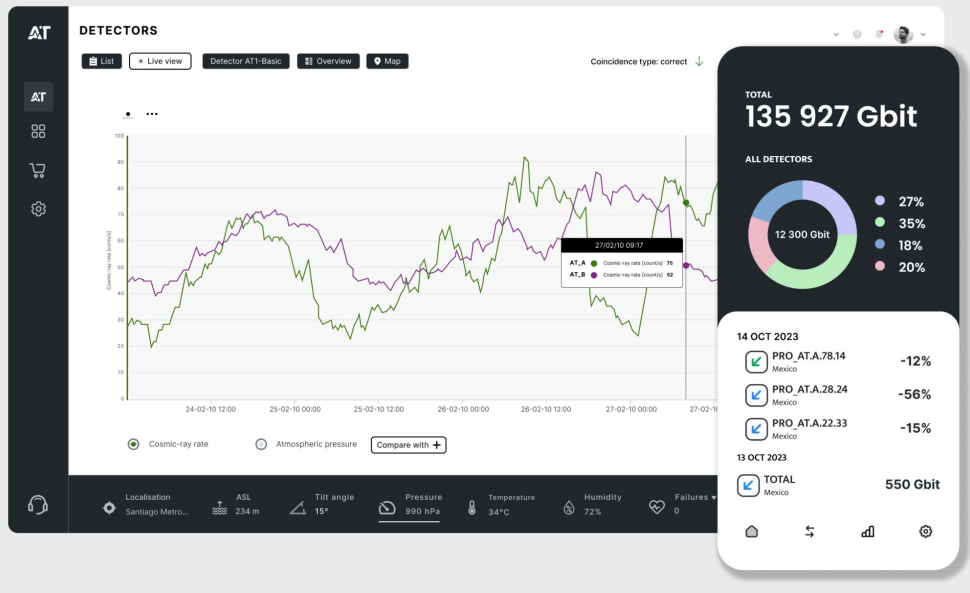
Data acquisition

PRO detector



BASIC detector

WEB APP



Users



Scientists

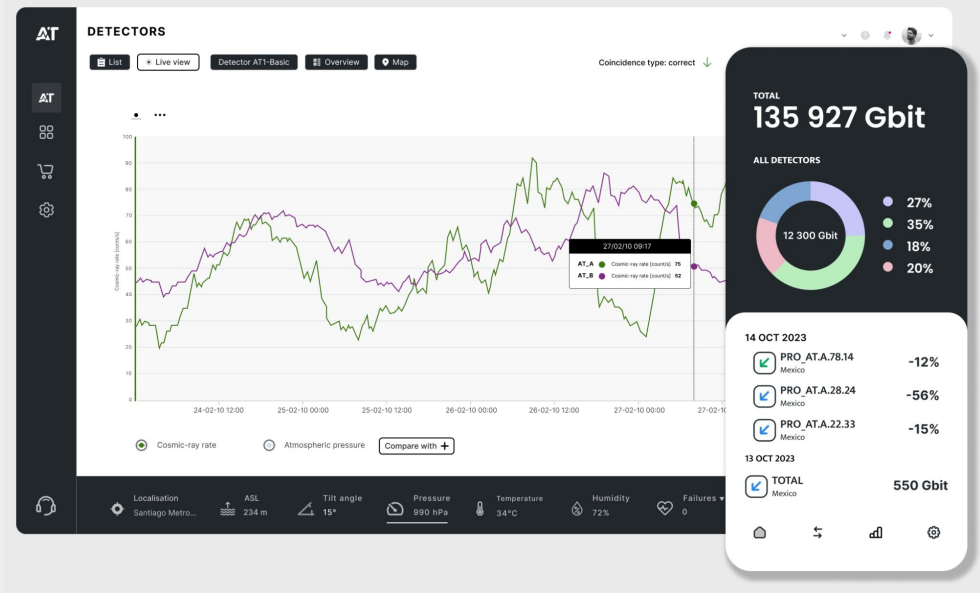


Students



Amateurs

WEB APP

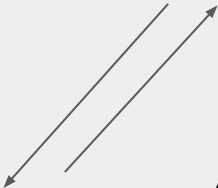


AT community

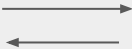
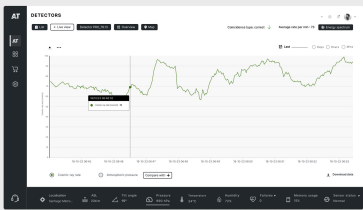
Scientists



AT



Students




Amateurs



AT

Condition Management



DETECTORS


Coincidence type: correct ▼ Average rate per min : 73

Off Restart Health report Economy mode Filter

<input type="checkbox"/>	NAME	VERSION	SN	DATA ACQUISITION	WI-FI	FAILURES	LOCAL GROUP	LOCATION	MODE
<input type="checkbox"/>	Detector PRO AT_A 78.13	PRO	TG1290UIGF	Activated	Connected	0	Not assigned	Santiago Metro..	Regular
<input type="checkbox"/>	Detector PRO AT_A 76.14	PRO	FG1290UIEA	Activated	Connected	1	Not assigned	Santiago Metro..	Regular
<input type="checkbox"/>	Detector PRO AT_A 88.13	PRO	TG1290UIGP	Activated	Connected	3	Not assigned	Santiago Metro..	Regular
<input type="checkbox"/>	Detector PRO AT_A 64.13	PRO	BG1290UIGF	Activated	Connected	2	Not assigned	Santiago Metro..	Regular
<input type="checkbox"/>	Detector PRO AT_A FF.17	PRO	LG1290UIGF	Activated	Connected	0	Not assigned	Santiago Metro..	Regular
<input checked="" type="checkbox"/>	Detector PRO AT_A 12.54	PRO	BB1290UIGF	Activated	Connected	0	Not assigned	Santiago Metro..	Regular
<input type="checkbox"/>	Detector PRO AT_A 44.6	PRO	AC1290UIGF	Activated	Connected	0	Not assigned	Santiago Metro..	Regular
<input type="checkbox"/>	Detector PRO AT_A 78.18	PRO	CP1290UIGF	Activated	Connected	0	Not assigned	Santiago Metro..	Regular
<input type="checkbox"/>	Detector PRO AT_A 78.47	PRO	WE1290UIGF	Activated	Connected	0	Not assigned	Santiago Metro..	Regular
<input type="checkbox"/>	Detector PRO AT_A 22.55	PRO	MG1290UIGF	Activated	Connected	0	Not assigned	Santiago Metro..	Regular

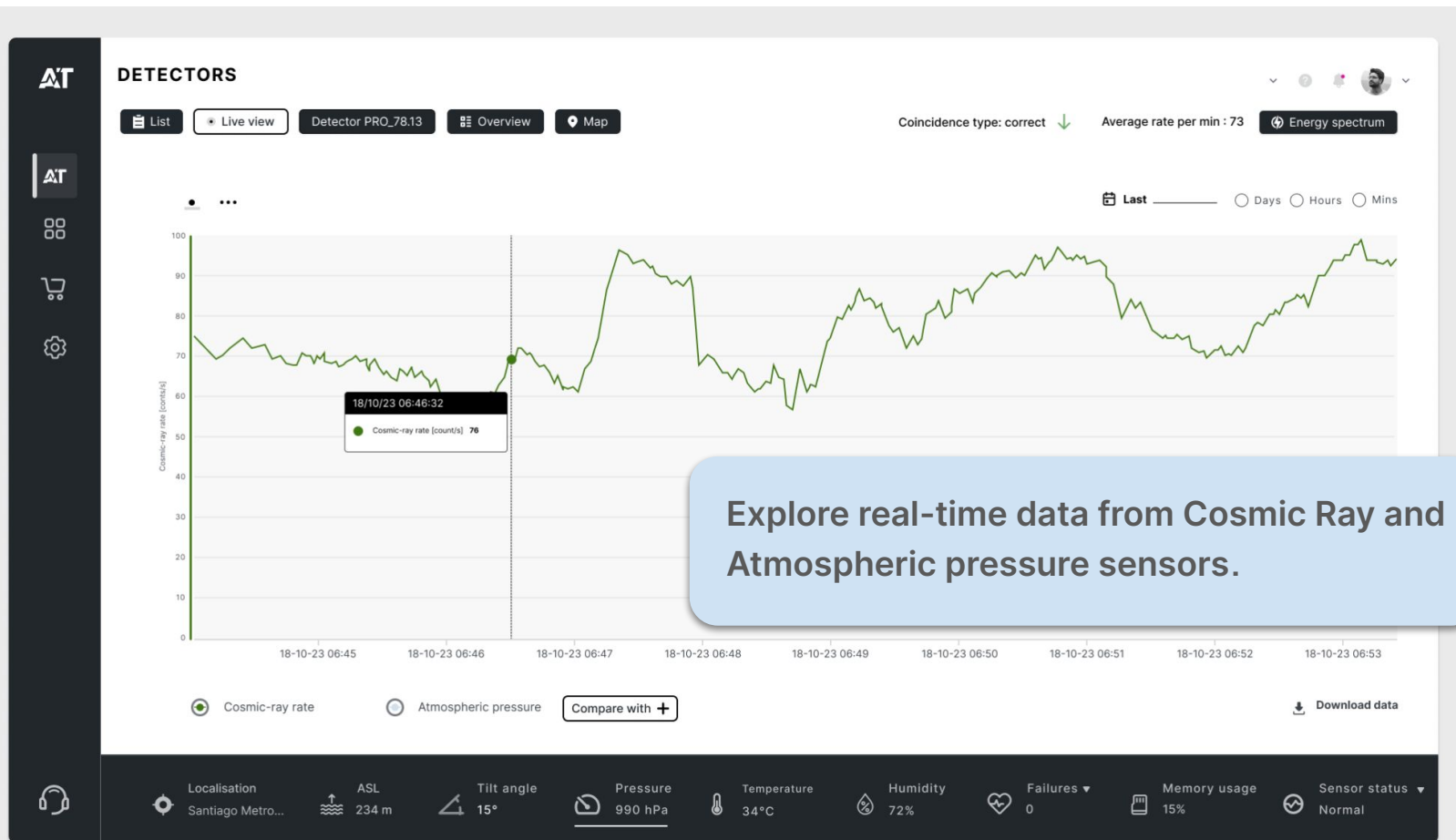
Rows per page: 10 1-2 of 2

Localisation: Santiago Metro... ASL: 234 m Tilt angle: 15° Pressure: 990 hPa Temperature: 34°C Humidity: 72% Failures: 0 Memory usage: 15% Sensor status: Normal

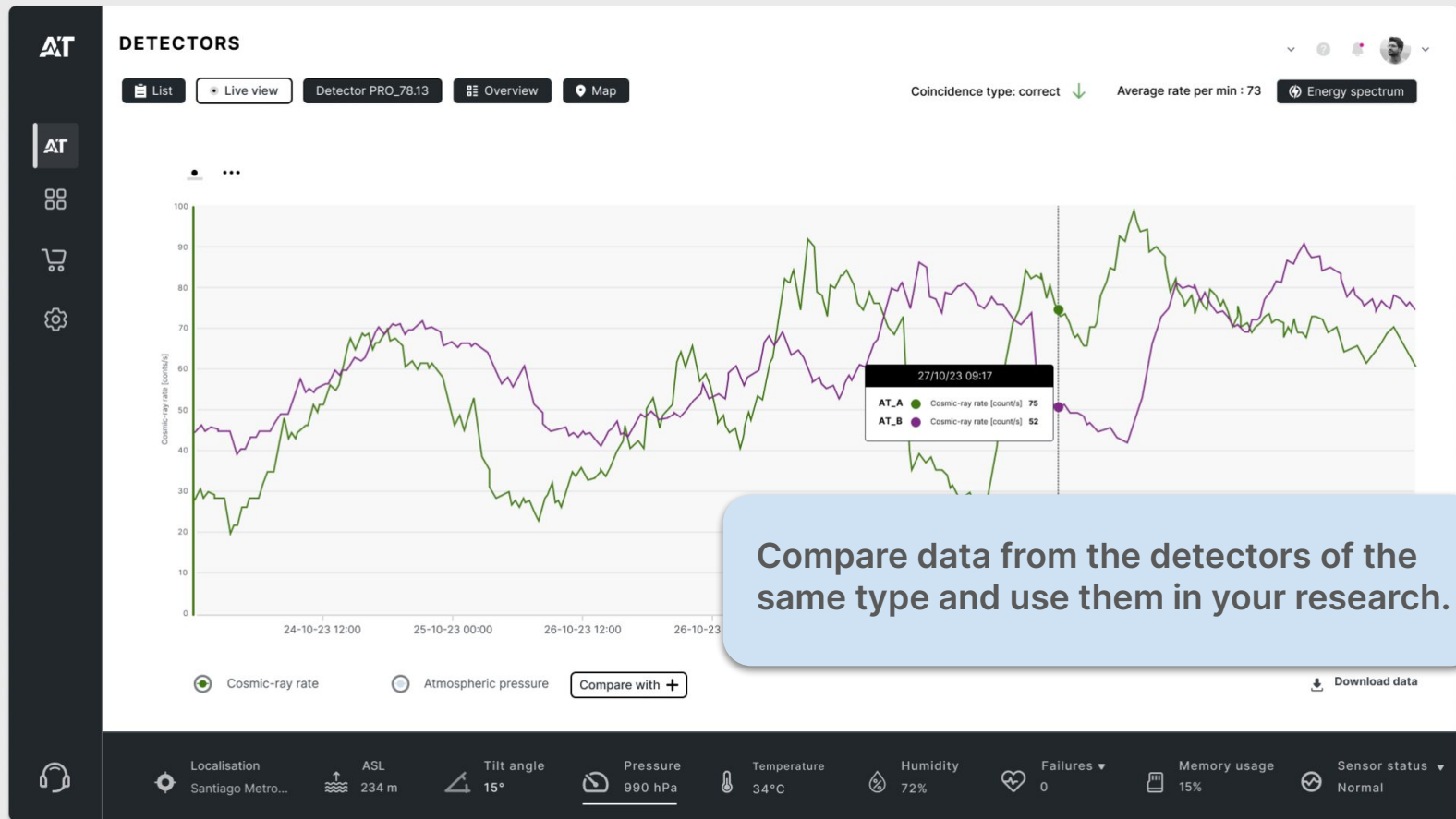


Manage all your Detectors in the Detector Software. You can see all your purchased devices and choose those you want to work with. Also, you can remotely control crucial functionality.

Real-time and Historical Data Observation

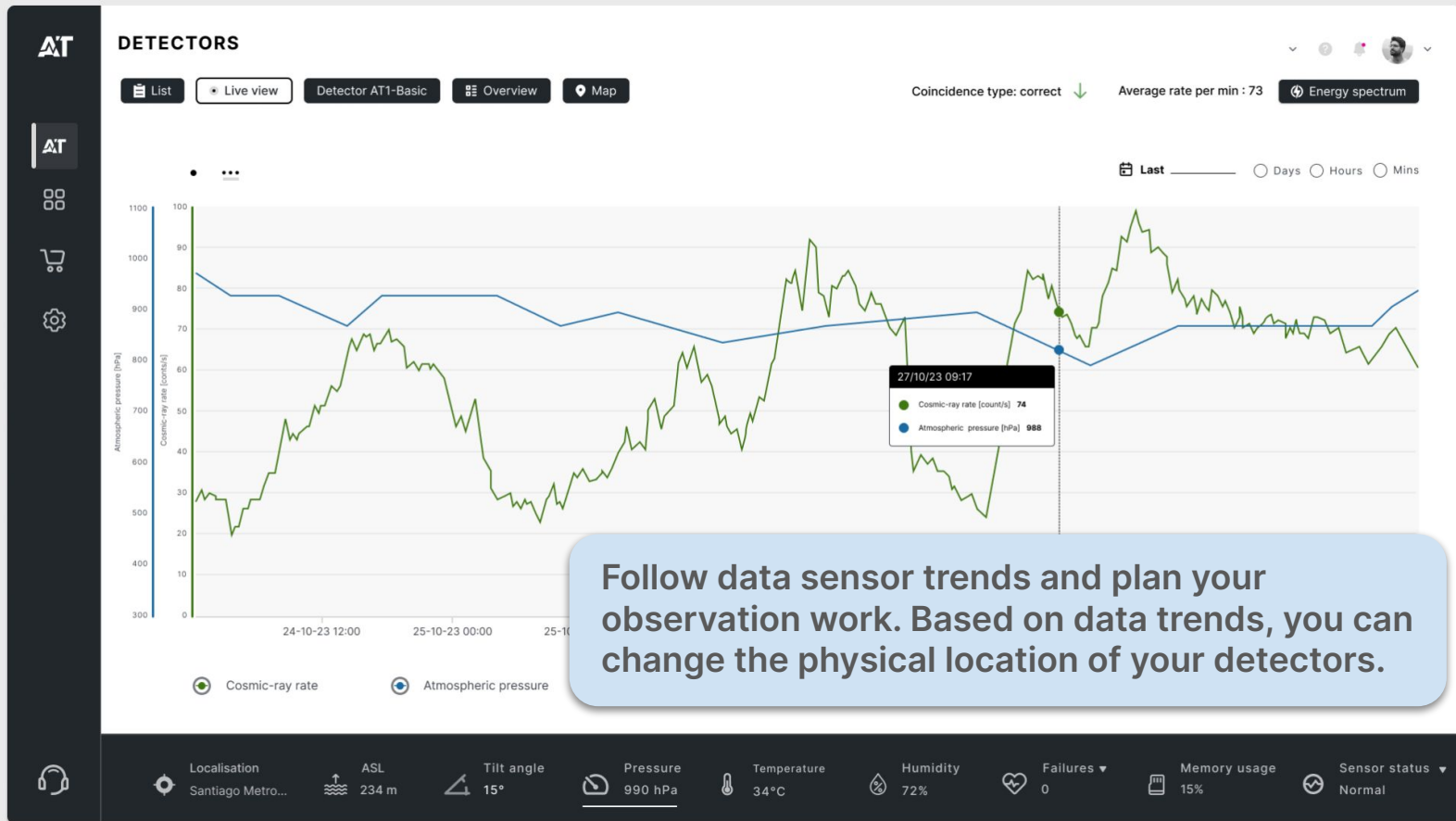


Comparing Data



Compare data from the detectors of the same type and use them in your research.

High-precision Trends



Map and Overview

AT

DETECTORS

Detector PRO_AT 7. Map List Live view Overview

Coincidence type: correct ↓ Average rate per min : 73 Energy spectrum

Last 4 Days Hours Mins

SN	DATA COLLECTING	Wi-Fi	LOCAL GROUP	Mode
TG1290UGF	Activated	Connected	Not assigned	Regular

Localisation Santiago Metro... ASL 234 m Tilt angle 15°

Wherever you are, the location of your detector is always under control.

Billing and Settings

BILLING

Manage your billing and payment details

Basic plan **Monthly** **\$120** per month
Our most popular plan [Upgrade plan](#)

Payment method
Change how you pay for your plan
Visa ending in 1234
Expiry 09/2027
k.robertsson@gmail.com [Edit](#)

Billing and invoicing
Pick an account plan that fits your workflow

<input type="checkbox"/>	Invoice	Billing date	Status	Amount	Plan	
<input type="checkbox"/>	Invoice #008-Dec 2023	Dec 1, 2023	✓ Paid	USD \$10.00	Basic plan	Download

Cosmic Ray Detector Version PRO Generation BETA
The task of the AstroTeq.ai detector in the professional version is the accurate detection of muons coming directly from cosmic rays. Detection is carried out using two large scintillators connected to SiPM diodes in the TOP-BOTTOM coincidence mode, i.e., the event is registered only when the particle first activates the upper detector...
Price: EUR 8500 [Order now](#)

Cosmic Ray DetectOr Version BASIC Generation BETA
The AstroTeq.ai Basic detector is a compact cosmic ray detector with the functionality of professional detectors used for cosmic ray research. Despite its small size, the device is equipped with two scintillators coupled with SiPM, working in the TOP-BOTTOM coincidence configuration.
Price: EUR 1190 [Order now](#)


Localisation: Santiago Metro...
ASL: 234 m
Tilt angle: 15°
Pressure: 990 hPa
Temperature: 34°C
Humidity: 72%
Failures: 0
Memory usage: 15%
Sensor status: Normal

AT

With just a single click, you can upgrade your subscription plan and add more detectors to your research station



Dashboard



DASHBOARD

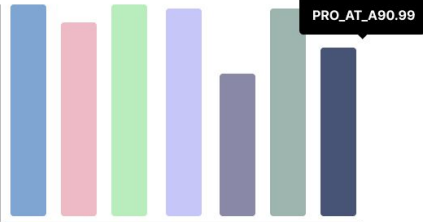
Now ▾ 24 h change ▾

DETECTOR	ONLINE	HUMIDITY	PRESSURE	MEMORY USAGE	TEMP.	MEMORY CHANGE	TEMP. CHANGE
PRO_AT_A 78.14	Connected	93%	950hPa	97%	22°C	-12% ↘	-2 ↘
PRO_AT_A 33.43	Connected	82%	920hPa	33%	34°C	-14% ↘	-5 ↘
PRO_AT_A 75.23	Connected	96%	1007hPa	82%	29°C	+12% ↗	+3 ↗
PRO_AT_A 68.22	Connected	73%	997hPa	20%	27°C	+12% ↗	-2 ↗
PRO_AT_A 11.05	Connected	84%	897hPa	26%	18°C	+42% ↗	-1 ↘
PRO_AT_A 90.99	Connected	91%	913hPa	74%	22°C	+56% ↗	-9 ↘
PRO_AT_A 78.13	Connected	88%	869hPa	82%	16°C	+44% ↗	+4 ↗

Keep track of key metrics during data acquisition in real time

All detectos

High performance data acquisition



48 h change ▾

- PRO_AT_A 78.14 96% -2% ↘
- PRO_AT_A 33.43 99% +13% ↗
- PRO_AT_A 75.23 93% -6% ↘
- PRO_AT_A 68.22 100% +4% ↗
- PRO_AT_A 11.05 94% -12% ↘
- PRO_AT_A 90.99 82% +7% ↗
- PRO_AT_A 78.13 74% -12% ↘

Localisation: Santiago Metro... ASL: 234 m Tilt angle: 15° Pressure: 990 hPa Temperature: 34°C Humidity: 72% Failures: 0 Memory usage: 15% Sensor status: Normal

